

SUCCESS BY THE

NUMBERS

Measuring our impact on the community this month.

43 STUDENTS BEING MENTORED BY LEAD

15 STUDENTS MENTORED BY VOLUNTEERS



SESSIONS



HOURS



SESSIONS



HOUR

70 TOTAL REFERRALS TO TMI

53
SCHOOLS

17
COMMUNITY

237

STUDENTS ON CASELOAD





SW AND CM SCREEN

children/family caseload for SDoH needs



REFERRALS

to resources

PROVIDE THERAPEUTIC ACTIVITIES

to moderate and high-risk children

71

SESSIONS

143

TOTAL HOURS

FAMILY & COMMUNITY OUTREACH



FAMILIES CASE-MANAGED

by FCOC

POLICE CLASSROOM VISITS

2025-2026 SCHOOL YEAR



Classrooms with two law enforcement visits

POLICE SUPPORT SPECIALISTS

5 NEW REFERRALS

2

DOMESTIC VIOLENCE

3

HOMELESS

1

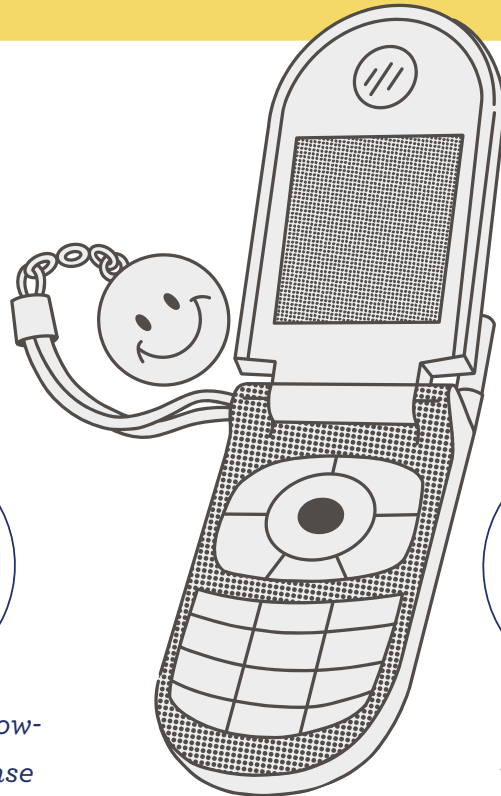
EMOTIONAL SUPPORT

PSS CASELOAD



56

PSS ENGAGEMENT



35

of unique individuals making or attempting to make contact with

25

of attempted follow-ups with no response (text, phone, visit)

110

of follow-ups with with 2-way engagement

PSS COMMUNITY EVENTS

1

Planned

5

Hours spent planning

8

Attended

16

Hours spent at events



PSS AGENCY MEETINGS

5

Attended

6.5

Hours spent at meetings

10

Attended

16.5

Hours spent at meetings



Melody's HOME



Families Served



Individuals Served



611
ITEMS GIVEN



Hygiene

138
ITEMS (23%)



Clothing

154
ITEMS (25%)



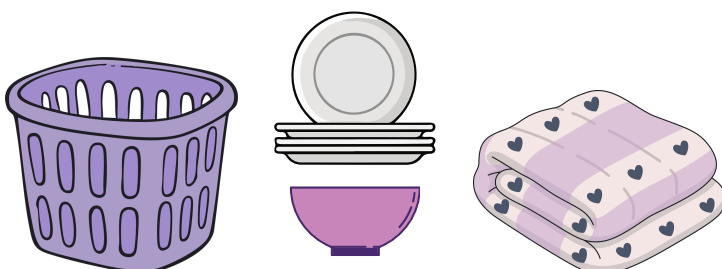
Food

167
ITEMS (27%)



Cleaning Supplies

92
ITEMS (15%)



Household Goods

43
ITEMS (7%)

