

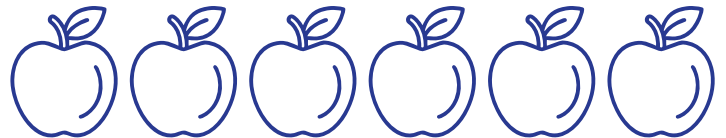
FEBRUARY 2026

SUCCESS BY THE

NUMBERS

Measuring our impact on the community this month.

15 EDUCATORS TRAUMA-TRAINED



27 STUDENTS BEING MENTORED BY LEAD

7 STUDENTS MENTORED BY VOLUNTEERS



SESSIONS



HOURS



SESSIONS



HOUR

41 TOTAL REFERRALS TO TMI

37
SCHOOLS

4
COMMUNITY

208 STUDENTS ON CASELOAD





SW AND CM SCREEN

children/family caseload for SDoH needs



REFERRALS

to resources

PROVIDE THERAPEUTIC ACTIVITIES

to moderate and high-risk children

35.5

SESSIONS

131

TOTAL HOURS

FAMILY & COMMUNITY OUTREACH



FAMILIES CASE-MANAGED

by FCOC

POLICE CLASSROOM VISITS

2025-2026 SCHOOL YEAR



Classrooms with two law enforcement visits

POLICE SUPPORT SPECIALISTS

25

NEW REFERRALS



9

MENTAL HEALTH

6

HOMELESS

2

SUPPORT OF A CHILD

1

DOMESTIC VIOLENCE

1

WELFARE CHECK

3

ELDERLY

3

SUBSTANCE USE

1

EMOTIONAL SUPPORT

2

BASIC/SOCIAL NEEDS



PSS

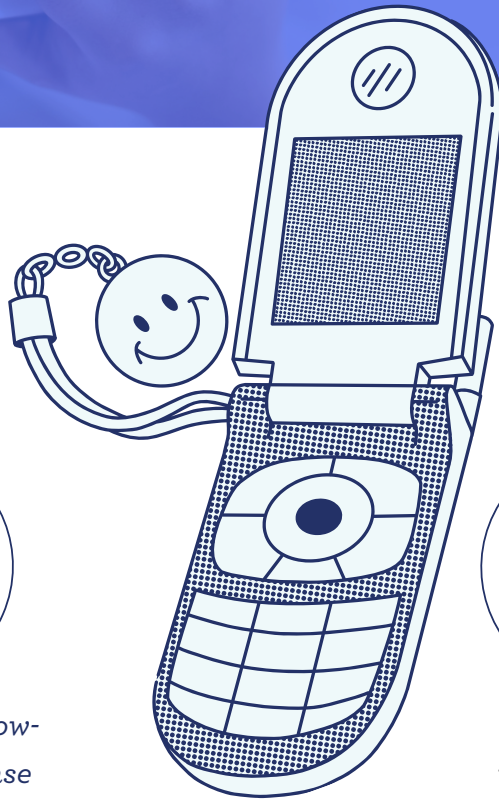
CASELOAD



72



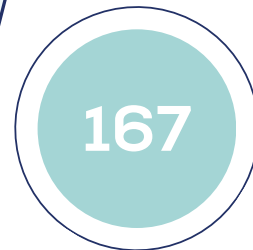
PSS ENGAGEMENT



of unique individuals making or attempting to make contact with



of attempted follow-ups with no response (text, phone, visit)



of follow-ups with with 2-way engagement



SBIRT DATA



PEOPLE SBIRT SCREENED



BRIEF INTERVENTIONS



REFERRAL TO TREATMENT

PSS COMMUNITY EVENTS

11 ATTENDED

23 HOURS SPENT AT EVENTS

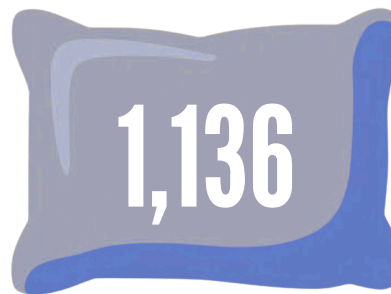
PSS AGENCY MEETINGS

17 ATTENDED

27 HOURS SPENT AT EVENTS



Individuals served by the Martinsburg Cold Weather Shelter



Total nights of shelter provided by MCWS



Number of individuals permanently housed out of MCWS



Individuals employed or connected with employment out of the MCWS



454

Items distributed from Melody's HOME