

# STAKEHOLDERS' NEWSLETTER



ABOVE PHOTO: The Martinsburg Initiative's March Madness Event at Martinsburg High School featured drills and skills with Olympian and Martinsburg native Vickie Bullett.

## 01

### SUCCESS BY THE NUMBERS

*See the impact we are having on the community.*

## 02

### MEET DARIAN

*We're excited to welcome Darian Amsler to the team as our newest Lead Mentor at TMI.*

## 03

### MEET LAURA

*We're excited to introduce our new School Support Specialist at Opequon Elementary School.*

## 04

### HEAR FROM DANIELLE!

*Our School Support Specialist at Charles Town Middle School*

## 05

### UNDERSTANDING 7-OH

*What communities should know about this powerful psychoactive compound*



# Greetings

*This month offered several opportunities to see our community come together around health, connection, and prevention.*

## PREVENTION DAY AT THE CAPITOL

An important moment this month was Prevention Day at the West Virginia State Capitol. The event brings together prevention professionals, advocates, and community members with legislators to share what is happening in communities across the state and discuss strategies that are making a difference.

For our team, the event was also a chance to strengthen relationships with partners across the state. Danielle Baker noted that she appreciated the opportunity to connect with agencies whose work she often hears about and to better understand the programs taking place in other regions. She also had the opportunity to meet representatives from WV First, the grant program that supports her position, who stopped by to recognize the work of The Martinsburg Initiative.

### AS DIANA ANTHONY SHARED,

*“The real value of Prevention Day goes beyond advocating for our communities—it’s also about connecting with others who are doing this important work. When prevention professionals come together, we have the opportunity to network, share best practices, and learn from one another’s successes. Those collaborations strengthen our collective impact and help ensure that prevention efforts are more effective and sustainable at both the local and state levels. Prevention Day at the Capitol truly highlights the power of partnership, bringing people together to share ideas and strategies that strengthen communities across West Virginia.”*



ABOVE PHOTO: Clinical Supervisor, Diana Anthony, presents about TMI's work at Prevention Day at the Capital.



ABOVE PHOTO: Charles Town Initiative School Support Specialist, Danielle Baker, and TMI's Drug-Free WV Coalition Coordinator, Tom Kearns, share information about the Jefferson-Berkeley Alliance at Prevention Day at the Capital.



ABOVE PHOTO: (Left to right): Danielle Baker, Diana Anthony, Tom Kearns, Margaret Kursey, Rebecca LeMoine, and Heather Green in attendance at the gala.

## COMMUNITY IN ACTION: HOPE GALA AND RANSON RACE 5K AND HEALTH AND WELLNESS FAIR

TMI team members also attended the 16th Annual Hope Gala on March 7th, where they met and spoke with a wide variety of community partners. Another highlight of the month was the Ranson Race 5K and Health & Wellness Fair, which brought more than 200 runners and over 60 vendors together at the Ranson Civic Center. The event created a welcoming environment where families, community organizations, and local businesses could connect and share resources that support healthier lifestyles.

Attendees had the chance to explore a variety of wellness booths, watch CPR demonstrations by Jefferson County Emergency Services, and enjoy demonstrations from local wellness providers. Lead Mentor Brian Hairston and School Support Specialist Danielle Baker met with community members and partner organizations to share information about the Jefferson-Berkeley Alliance's work and vision.

## SUPPORTING OUR NEIGHBORS DURING THE WINTER

As winter comes to a close, the Martinsburg Cold Weather Shelter is also wrapping up its first season—an effort that highlights what community collaboration can accomplish. Since opening in early January with support from Martinsburg City Council, the rotating overnight shelter has served 58 individuals and provided more than 1,100 nights of shelter during the coldest months of the year. Hosted on a rotating basis by six local churches—Christ Reformed United Church of Christ, St. John's Lutheran Church, Trinity Episcopal Church, Otterbein United Methodist Church, St. Luke's United Methodist Church, and Destiny Baptist Church—the program was created to ensure that no one in Martinsburg has to sleep outside during severe winter weather. Volunteers across the community helped provide meals, donate supplies, and assist with weekly transitions between host sites.

Beyond offering a warm place to sleep, the shelter has helped connect guests with longer-term support. Seven individuals have secured employment, and five have transitioned into permanent housing, while many others have been connected with case management, medical care, mental health services, or housing support. As staff member Nannette Redmon shared, "These aren't statistics. They are neighbors who now have a front door key and a paycheck."

*The Martinsburg Initiative is so proud of all of the staff members, community organizations, and volunteers who have joined together to provide this safe, warm space this winter.*



ABOVE PHOTO: Police Support Specialists, Jennifer Kees and Alex Gonzales, share information about their role for the Unity Campaign.

## THANK YOU TO ALL THOSE WHO SUPPORTED THIS YEAR'S UNITY CAMPAIGN!

We are also grateful for the support shown through this year's Unity Campaign. Thanks to 48 donors and 14 fundraisers, our community raised \$4,010 to support prevention and community wellness initiatives. This kind of local investment strengthens our ability to continue building partnerships and providing programs that support healthier outcomes for individuals and families.

## WELCOMING NEW TEAM MEMBERS

Finally, we are pleased to welcome several new members to our team: Laura, Darian, Ashley, and Heather. As our work continues to expand, their experience and commitment will strengthen our efforts to support prevention and community wellness across the region.

*Thank you for staying connected to our work and for the many ways you contribute to building a stronger, healthier community.*

*Margaret*

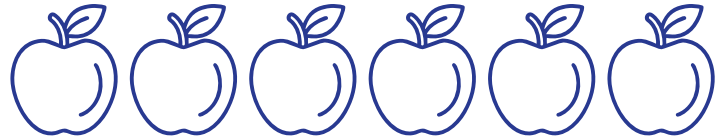
FEBRUARY 2026

SUCCESS BY THE

# NUMBERS

*Measuring our impact on the community this month.*

**15** EDUCATORS TRAUMA-TRAINED



**27** STUDENTS BEING MENTORED BY LEAD

**7** STUDENTS MENTORED BY VOLUNTEERS



SESSIONS



HOURS



SESSIONS



HOUR

**41** TOTAL REFERRALS TO TMI

**37**  
SCHOOLS

**4**  
COMMUNITY

**208** STUDENTS ON CASELOAD





## SW AND CM SCREEN

*children/family caseload for SDoH needs*



## REFERRALS

*to resources*

## PROVIDE THERAPEUTIC ACTIVITIES

*to moderate and high-risk children*

# 35.5

SESSIONS

# 131

TOTAL HOURS

# FAMILY & COMMUNITY OUTREACH



## FAMILIES CASE-MANAGED

*by FCOC*

# POLICE CLASSROOM VISITS

2025-2026 SCHOOL YEAR



*Classrooms with two law enforcement visits*

# POLICE SUPPORT SPECIALISTS

25

NEW REFERRALS



9

MENTAL HEALTH

6

HOMELESS

2

SUPPORT OF A CHILD

1

DOMESTIC VIOLENCE

1

WELFARE CHECK

3

ELDERLY

3

SUBSTANCE USE

1

EMOTIONAL SUPPORT

2

BASIC/SOCIAL NEEDS



PSS

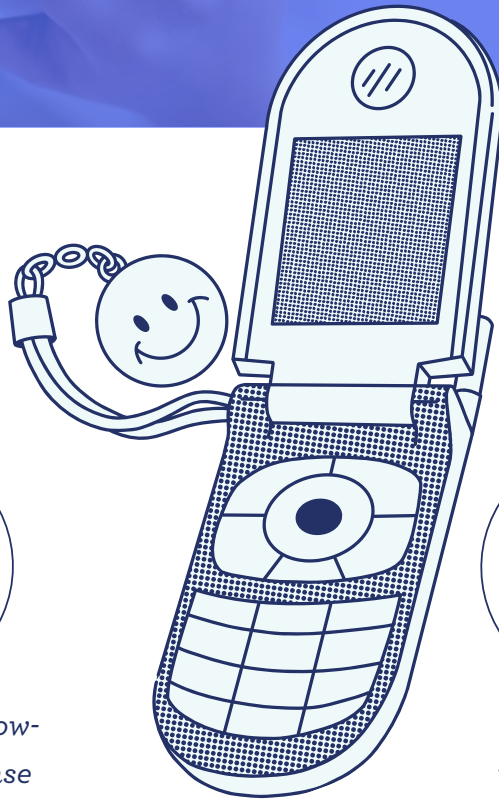
CASELOAD



72



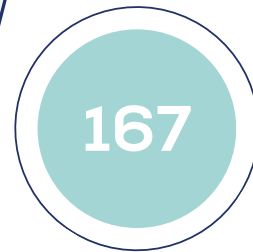
# PSS ENGAGEMENT



*# of unique individuals making or attempting to make contact with*



*# of attempted follow-ups with no response (text, phone, visit)*



*# of follow-ups with with 2-way engagement*



## SBIRT DATA



**PEOPLE SBIRT SCREENED**



**BRIEF INTERVENTIONS**



**REFERRAL TO TREATMENT**

PSS **COMMUNITY  
EVENTS**

**11** ATTENDED

**23** HOURS SPENT AT EVENTS

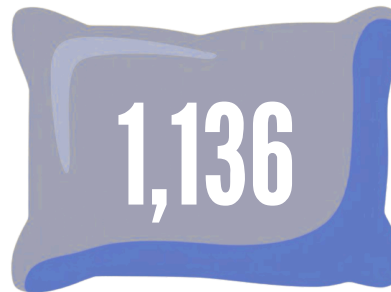
PSS **AGENCY  
MEETINGS**

**17** ATTENDED

**27** HOURS SPENT AT EVENTS



*Individuals served by  
the Martinsburg Cold  
Weather Shelter*



*Total nights of shelter  
provided by MCWS*



*Number of individuals  
permanently housed out  
of MCWS*



*Individuals employed or  
connected with employment  
out of the MCWS*



**454**

*Items distributed from  
Melody's HOME*



BY TMI STAFF

**ABOVE:** Darian Amsler, newest Lead Mentor at TMI

**“HAVING A HEART FOR EVERY STUDENT TO FEEL SEEN AND VALIDATED, THE OPPORTUNITY TO SERVE IN A MENTORING CAPACITY FELT LIKE A NATURAL NEXT STEP FOR ME.”**

In his role as Lead Mentor, Darian will focus on helping students build and strengthen personal resiliency, emotional regulation, and decision-making skills, all of which are critical protective factors in preventing substance use and empowering youth to thrive. His experience, passion, and steady presence will play an important part in advancing TMI’s mission to build resilience in our community’s young people.

# MEET DARIAN

We’re excited to welcome Darian Amsler to the team as our newest Lead Mentor at The Martinsburg Initiative!

*Before joining TMI, Darian served as the NextGen Director at Crossroads Church in Martinsburg for four years. Over the past 20+ years, he has worked alongside public schools in a variety of roles, from substitute teaching to volunteering, consistently demonstrating a deep commitment to supporting students. Serving in a mentoring capacity felt like a natural next step, allowing him to continue investing directly in young people’s lives in a meaningful and lasting way.*

One accomplishment Darian is especially proud of is partnering with local schools in Martinsburg to assist with indoor and outdoor renovation projects, enhancing learning and engagement spaces for students. His hands-on commitment to improving environments where students learn and grow speaks to his servant-leadership mindset. Outside of his professional work, Darian is a self-proclaimed sports fanatic, loves a good cup of coffee, and will never pass up free Chick-fil-A.

*Please join us in welcoming Darian to the TMI team! We’re grateful to have him on this journey with us.*



# MEET LAURA

*We're excited to introduce Laura LaBerge, MSW, LGSW, who is joining The Martinsburg Initiative as a School Support Specialist at Opequon Elementary School!*

Her professional path reflects a lifelong passion for social work – something she credits to her mother, whom she lovingly describes as the “Eleanor Roosevelt of the neighborhood.”

Before joining TMI, Laura worked with West Virginia University, specializing in foster care. Her professional path reflects a lifelong passion for social work – something she credits to her mother, whom she lovingly describes as the “Eleanor Roosevelt of the neighborhood.” Inspired by her mother’s fierce advocacy and servant leadership, Laura embraced social work as both a calling and a natural next step.

BY TMI STAFF

**ABOVE: Laura LaBerge, School Support Specialist**

Originally from Michigan, Laura also holds dual citizenship in both Canada and the United States (as her last name might hint!) and formerly lived in Florida. Her diverse background brings a unique perspective and depth of experience to our team.

Laura shared that she was inspired to join The Martinsburg Initiative after seeing the meaningful, community-centered work being done across Martinsburg. Now stepping into her role at Opequon, she is eager to begin making an impact, starting with each individual student and family she connects with. Through relationship-building, advocacy, and support, she will help advance TMI's mission to prevent substance use and strengthen youth resilience.

One accomplishment Laura is especially proud of is serving on former Governor Jeb Bush's hurricane task force in Florida during a time when devastating storms struck both sides of the state. When insurance companies considered pulling out, the task force enforced a "No Leave" policy to protect residents – a powerful example of Laura's commitment to standing up for communities in moments of crisis.

**AND HERE'S A FUN SURPRISE: LAURA ONCE WORKED IN THE STUDENT WORK PROGRAM AT WALT DISNEY WORLD AS MINNIE MOUSE HERSELF! TALK ABOUT RESILIENCE AND RANGE!**

Laura shares that she is grateful to be here and looks forward to being part of the team. Please join us in warmly welcoming her to The Martinsburg Initiative!



BY TMI STAFF

# HEAR FROM DANIELLE!

*School Support Specialist at Charles Town Middle School*

Danielle Baker serves as the School Support Specialist at Charles Town Middle School, where she works closely with students to provide guidance, encouragement, and practical support. She joined The Martinsburg Initiative in the fall of 2023 and recently expanded her role to also work with the Jefferson-Berkeley Alliance (JBA) team at the Charles Town Initiative and The Jefferson Initiative in Jefferson County. Danielle says she has loved making the move to Jefferson County and is proud to now be part of the team representing JBA and the county's prevention efforts.

For Danielle, the most meaningful part of her role is the relationships she builds with students. She enjoys helping students recognize their own potential and celebrating their achievements—no matter how big or small.



**ABOVE:** Danielle Baker, School Support Specialist at Charles Town Middle School

**WHETHER IT'S A STUDENT STOPPING HER IN THE HALLWAY FOR A HIGH FIVE OR KNOCKING ON HER DOOR TO SHARE A SUCCESS, THOSE MOMENTS MEAN A LOT. "IT'S NOT JUST THE VICTORY CELEBRATION," DANIELLE SAYS.**

**“IT’S THE FACT THAT THEY DECIDED I WAS WORTH TELLING, THAT THEY TRUST ME ENOUGH TO SHARE THAT MOMENT.” SHE ALSO VALUES THE TIMES WHEN STUDENTS SEEK HER OUT FOR EXTRA SUPPORT, KNOWING THAT THEY FEEL SAFE ENOUGH TO SHARE THEIR STRUGGLES.**

Danielle’s daily work centers on supporting students one-on-one, helping them set and work toward personal goals. She also provides crisis support and case management when needed. This year has been a little different, as Danielle transitioned from a community already familiar with TMI’s work to one where she is helping introduce and grow the program. In addition to her school-based work, she collaborates with local partners and participates in community events to build awareness of JBA. She has also completed Crisis Intervention Team training to assist with colleague-led trainings and provides support to other organizations, including meeting with students at the Boys & Girls Club.

Danielle has celebrated several successes over the past year. In October, she passed her licensure exam and officially became a Licensed Social Worker. She also considers it a victory that students throughout the school now recognize her—something she’s reminded of when she hears her name being called in the hallway.

Looking ahead, Danielle is excited to be part of the planning committee for the upcoming Elevate Youth, Elevate Joy event. She also enjoyed attending Prevention Day at the Capitol, where she connected with agencies from across the state, met partners behind programs she had previously only heard about, and helped represent JBA’s work alongside colleagues.

Through her dedication to connection, support, and community collaboration, Danielle continues to make a meaningful difference in the lives of both Berkeley and Jefferson County students every day.

## **MEET DANIELLE**

*School Support Specialist at Charles Town Middle School*



## UNDERSTANDING

# 7-OH

### *What Communities Should Know*

BY TMI STAFF

*A growing number of products on the market contain 7-Hydroxymitragynine (7-OH), a powerful psychoactive compound that occurs naturally in very small amounts in the plant Kratom, which is native to Southeast Asia.*

### *What is 7-OH?*

While natural plants contain only trace levels of this compound, many products sold today contain highly concentrated forms of 7-OH produced in laboratories. These products are often marketed or mislabeled as natural kratom products and promoted as helping with focus, pain, or anxiety.



## *Where Are 7-OH Products Sold?*

*7-OH products are widely available online and in retail locations such as gas stations and vape shops.*

They may appear as chewable or dissolvable tablets, gummies, oils, vape pens, or liquid “shots.” The packaging often resembles energy drinks or candy, which can create the misleading impression that these products are safe or natural alternatives to prescription medications.



## *What are the risks?*

*The U.S. Food and Drug Administration (FDA) has not approved 7-OH for medical use, and its safety has not been established.*

Reported risks associated with kratom or 7-OH products include liver toxicity, seizures, breathing problems, and the potential for substance use disorder. Regular use can also lead to dependence and withdrawal symptoms similar to those seen with opioids. Short-term effects may include nausea, increased heart rate, and difficulty breathing.

*Although 7-OH use is still relatively uncommon, nearly one million youth and young adults report having used kratom at some point.*

## *How Common is Use?*

Increasing awareness is important because many 7-OH products are mislabeled and sold without clear information about their contents.



## *What can communities do?*

*Community coalitions and prevention partners can play an important role in addressing emerging substances like 7-OH.*

This includes educating the public about the risks, strengthening youth refusal skills, working with retailers and business groups to enforce age restrictions, and informing policymakers about responsible product marketing and access.



## *What to do in an emergency.*

*In an emergency involving a suspected overdose, Naloxone may help reverse opioid-like effects.*

Call 911 immediately if someone is unresponsive or needs urgent medical attention. You can also contact Poison Control (1-800-222-1222) or visit [poisonhelp.org](http://poisonhelp.org) for guidance. Additional information is available from the FDA and the Association of State and Territorial Health Officials (ASTHO).

## **RESOURCES**

- [\*Kratom 101: What You Need to Know\*](#)
- [\*Preventing The Next Wave of the Opioid Epidemic: What You Need to Know About 7-OH\*](#)

# CALL FOR MENTORS!

We are seeking volunteer mentors to support students!



## HELP STUDENTS

### What will mentors do?

- Build positive relationships
- Meet with students at least once a week for thirty minutes
- Improve academic performance
- Build life skills

### Please contact:

Rebecca LeMoine  
304-267-3510 ext 13519  
[rlemoine@themartinsburginitiative.org](mailto:rlemoine@themartinsburginitiative.org)

PHOTO: Please contact Rebecca LeMoine at (304) 267-3510 ext 13519 or [rlemoine@themartinsburginitiative.org](mailto:rlemoine@themartinsburginitiative.org) to become a student mentor.

# CRISIS INTERVENTION TRAINING



This **40-hour training** is designed to prepare law enforcement officers to effectively and safely respond to individuals experiencing mental health crises. This comprehensive training covers de-escalation techniques, mental health awareness, local resource navigation, and practical scenario-based exercises.

**L** April 13-17, 2026  
**8:30 AM - 4:30 PM**

## REGISTRATION REQUIRED

Before April 5<sup>th</sup>  
20 participants maximum

**Our Location**  
**128 INDUSTRIAL BLD. KEARNEYSVILLE, WV**



**Expert Instructors**  
Including law enforcement professionals, behavioral health providers, and community experts.

**Service Credits**  
This training provides 40 in-service credits through LEPSIS.

Participants will:

- Gain skills in de-escalation and crisis communication
- Enhance their understanding of mental health and SUD
- Engage in role-play scenarios and interactive exercises
- Learn to connect individuals in crisis with appropriate community services



- Business casual attire; uniforms not required
- Drinks and snacks provided; break for lunch each day
- Full participation required; completion certificate awarded
- Active engagement expected throughout



## Questions?

Noel Canellas  
304-582-2799  
mpdsocialworker@martinsburgpd.org



PHOTO: Please contact Noel Canellas at (304) 582-2799 or mpdsocialworker@martinsburgpd.org to enroll in Crisis Intervention Training.

# Learn. Engage. Create.



## Martinsburg, WV

In partnership with The Martinsburg Initiative and West Virginia Department of Education.

### Overview

Based on survey results, participants noted the importance of communication, building trust, creative engagement strategies, and forming stronger school- family- community partnerships through consistency and creativity. They appreciated opportunities to collaborate with peers, share ideas, and explore practical, low barrier family engagement approaches.

### Impact

Nearly all participants (**94%**) agreed or strongly agreed that they left the training with new insights or strategies to strengthen family engagement.



## Key Takeaways & Participant Voice



### Family engagement can be simple , consistent, and intentional.

"Family engagement doesn't have to be a big deal just frequent."  
"Engagements is small moments."



### Family engagement & connection can be strengthened through hands-on strategies like art and LEGO® play.

"You can add play to engage in the simplest of ways."  
"[There are] so many more opportunities for family engagement than I thought before."



### Family engagement is built through partnership and trust.

"Loved the connection between trust and engagement."  
"Learning what family engagement is and how we can all work together."

## Strategies Learned

- Learning more about the **definition** of family engagement
- **Art** as a way to communicate
- Importance of **building trust** when working with families
- Utilizing **communication** with everyone involved with a student.

## Notes to EdVenture

- *I am grateful to have taken part in this training and networking opportunity. They have assisted with my own motivation to be more strategic with how we engage families.*
- *Great training. Love the activities and diversity.*
- *This was great opportunity to improve and network with other professions.*
- *[I am]thinking about ways to create school- community connections.*
- *Everything is relevant and was pieced together collaboratively.*

This project was made possible by Grant # S31-A230010 from the U.S. Department of Education. This content does not necessarily represent the official views of the U.S. Department of Education.

THOUSANDS OF US ARE IN RECOVERY.

**YOU CAN BE TOO.**



**WHEN IT'S TIME, WE'RE HERE.**

**CALL 1-844-HELP4WV**



FUNDED IN PART BY





**4TH TUESDAY OF EACH MONTH**

**10:00 AM to 12:00 PM**

**COMMUNITY CUP COFFEE & MORE**

Open to community members 55+  
No appointment needed.

# Coffee and Care

Monthly Senior Wellness Events

## **WHAT IS COFFEE AND CARE?**

A free monthly event designed to support the health, safety, and wellness of our 55+ community. Enjoy coffee, conversation, and rotating activities that help you stay connected and informed.

## **HOW CAN THE MARTINSBURG INITIATIVE'S SOCIAL WORKERS HELP ME?**

Housing assistance applications | Utility relief and benefits navigation | Medicare/Medicaid guidance | Health and wellness information | Caregiver and behavioral health referrals | "Stay Safe at Home" kits for eligible seniors

## **UPCOMING TOPICS:**

- Dementia & Alzheimer's signs, support, and prevention
- Support for caregivers and recognizing elder abuse
- Fall prevention and home safety tips
- Navigating government phones and email
- Medicare/Medicaid enrollment Q&A;
- Chair yoga or gentle movement sessions
- Nutrition for healthy aging



**PHOTO:** Coffee and Care Monthly Senior Wellness Events held at The Community Cup and cohosted by TMI. Get help and resources from TMI Social Workers and enjoy coffee and conversation.

The Martinsburg Initiative and Community  
Cup Coffee and More present:

# Senior Support



The Martinsburg Initiative's Social Workers will be on-site weekly to assist senior citizens with vital resources, including:

- Help staying safely housed
- Utility relief & benefits navigation
- Medicare/Medicaid guidance
- Health & wellness info
- Caregiver and behavioral health referrals
- Providing free "Stay Safe at Home" Kits for eligible seniors

No appointment needed — just stop in for coffee and connection!

📍 **Community Coffee Cup and More**  
🕒 **Every Tuesday | 10 AM – 12 PM**



THE  
**MARTINSBURG**  
INITIATIVE



PHOTO: Coffee and Care Weekly Senior Wellness Events held at The Community Cup and cohosted by TMI. Get help and resources from TMI Social Workers and enjoy coffee and conversation.



# START TALKING BEFORE SHE HEADS OFF TO SCHOOL.

It's never too early to have a conversation about alcohol and other drugs.

The sooner you talk about the dangers of underage drinking and substance use, the greater chance you have of influencing your child's decisions about using alcohol and other drugs. For tips on how—and when—to begin the conversation, visit

[www.underagedrinking.samhsa.gov](http://www.underagedrinking.samhsa.gov)

#TalkTheyHearYou

PEP20-03-01-043



**SAMHSA**  
Substance Abuse and Mental Health  
Services Administration



THE  
**MARTINSBURG**  
INITIATIVE  
A POLICE, SCHOOL, COMMUNITY PARTNERSHIP

FIND US HERE >

BERKELEY HEIGHTS ELEMENTARY  
BUNKER HILL ELEMENTARY  
BURKE STREET ELEMENTARY  
EAGLE SCHOOL INTERMEDIATE  
ORCHARD VIEW INTERMEDIATE  
OPEQUON ELEMENTARY  
ROSEMONT ELEMENTARY  
TUSCARORA ELEMENTARY

WINCHESTER AVE ELEMENTARY  
PIKESIDE PRE-K LEARNING CENTER  
NORTH MIDDLE SCHOOL  
SOUTH MIDDLE SCHOOL  
MARTINSBURG HIGH SCHOOL  
MILL CREEK INTERMEDIATE SCHOOL

Contact us to be a mentor.

OUR PARTNERS





*Get the facts about electronic cigarettes, their health effects and the risks of using e-cigarettes.*

E-cigarettes (also called “vapes”) have been the most commonly used tobacco product among U.S. youth since 2014. Educators can make a real difference by engaging in meaningful conversations with their students about the dangers of vaping for young people and ways to quit.

CDC launched the Empower Vape-Free Youth™ campaign in 2023 to encourage middle and high school educators to speak with students about the risks of e-cigarettes and nicotine addiction. The campaign also provides resources for educators to help students avoid or quit vaping.

**EMPOWER**  
*Vape-Free*  
**YOUTH™**



Info Provided by the Center for Disease Control and Prevention

**EMPOWER VAPE-FREE YOUTH**

[www.cdc.gov/vaping](http://www.cdc.gov/vaping)



**FIND US HERE >**

- BERKELEY HEIGHTS ELEMENTARY
- BUNKER HILL ELEMENTARY
- BURKE STREET ELEMENTARY
- EAGLE SCHOOL INTERMEDIATE
- ORCHARD VIEW INTERMEDIATE
- OPEQUON ELEMENTARY
- ROSEMONT ELEMENTARY
- TUSCARORA ELEMENTARY

- WINCHESTER AVE ELEMENTARY
- PIKESIDE PRE-K LEARNING CENTER
- NORTH MIDDLE SCHOOL
- SOUTH MIDDLE SCHOOL
- MARTINSBURG HIGH SCHOOL
- MILL CREEK INTERMEDIATE SCHOOL

*Contact us to be a mentor.*

OUR PARTNERS





# A MODEL SOLUTION

TO A NATIONAL PROBLEM

*Our mission is to prevent substance use disorders, build strong families, and empower the Martinsburg community through police, school, community, health, and education partnerships.*

1

### Increase awareness

of how to prevent substance use disorder through community empowerment.

2

### Mitigate negative consequences

Resulting from substance misuse or trauma through community interventions, medication overdose.

3

### Identify, risk stratify and offer appropriate interventions

for individuals experiencing risk factors of trauma or substance misuse.

4

### Evaluate and report performance.



THE  
**MARTINSBURG**  
INITIATIVE

A POLICE, SCHOOL, COMMUNITY PARTNERSHIP